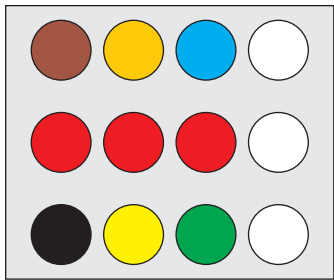


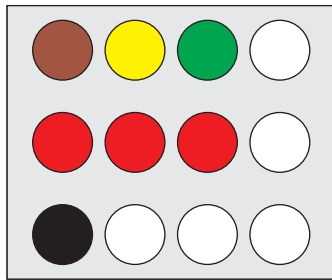


info@hydroholics.net
www.hydroholics.net

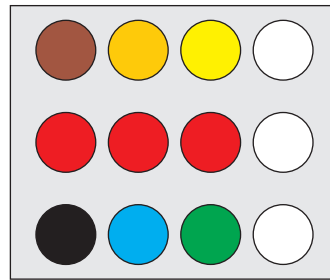
One Pump Five Dump 12 Prong Switch Configuration



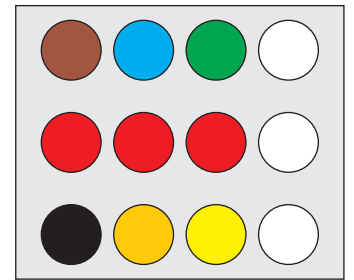
Front






Back



Left Side
(Up & Down)



Right Side
(Up & Down)

-  Hot, 24V on Battery
-  "S" Lead on Solenoid
-  Unused

-  Front Left Dump
-  Front Right Dump
-  Left Rear Dump
-  Right Rear Dump
-  Center Return Dump

Note:

Colors represent wire positioning only, not a true color relation to switch cord

May be necessary to wire the back switch "up" to open the front two dumps should your vehicle have a smaller/lighter engine